



PRODUCT GUIDE

FILTER & WATER WELL SUPPLY DIVISION

- NSF certified materials
- We produce and supply all types of filter media
- Products used for rapid, slow sand & pressure filtration systems
- Specializing in custom sizing and made to order products
- Many delivery and packaging options

MORINVILLE PLANT



TARGET PRODUCTS LTD

"Your Filter Media Specialist"

A wholly-owned subsidiary of The QUIKRETE® Companies

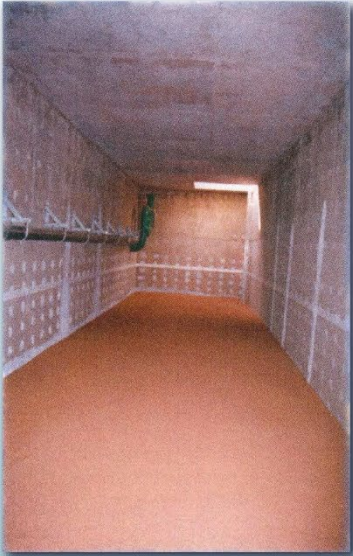
MEDIA STOCKPILE READY FOR INSTALLATION



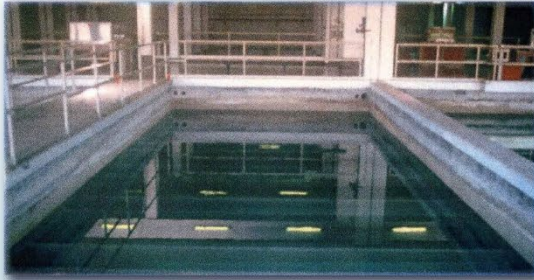
Certified to NSF/ANSI 61

www.targetproducts.com

WATER FILTRATION MEDIA



Municipal Filters



Water Treatment Plants

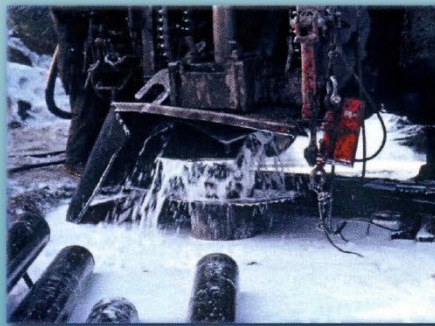


Swimming Pools

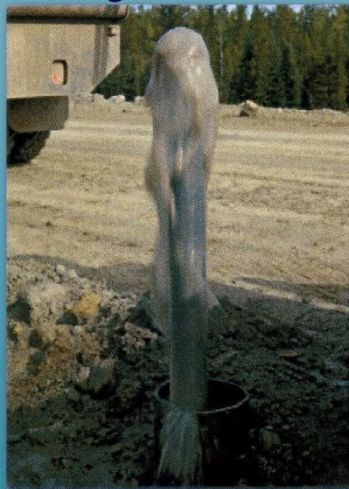
WATERWELL SANDS



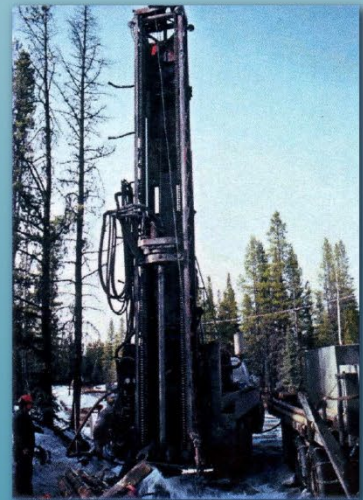
Piezometers



Dewatering Wells



Monitoring Wells



Potable Wells



FILTER MEDIA CATALOGUE

FILTER PRODUCTS PACKAGING			
ITEM#	FILTER PRODUCTS	SIZE kg / lb	Bag/Pallet
FILTER MEDIA - Essential for Pool & Spa			
* 9992150PRE	FILTER SAND 20-40 PREMIUM	22.7 kg (50 lb)	56
◆ 9992149	FILTER GLASS POOL & SPA	22.7 kg (50 lb)	63
◆ 9992150	FILTER GLASS POOL & SPA #2 COARSE	22.7 kg (50 lb)	63
FILTER SAND - Water well, Industrial, municipal and potable water treatment applications			
* 99932003	FILTER SAND 4-10 – POLY BAGS	25 kg (55 lb)	56
* 99932807	FILTER SAND 4-10	~1750 kg (3,850 lb)	1 Bulk Bag
* 99932151	FILTER SAND 10-20	22.7 kg (50 lb)	56
* 99932804	FILTER SAND 10-20	~1750 kg (3,850 lb)	1 Bulk Bag
* 99932015	FILTER SAND 16-30	22.7 kg (50 lb)	56
* 99932803	FILTER SAND 16-30	~1750 kg (3,850 lb)	1 Bulk Bag
* 9992150	FILTER SAND 20-40 STANDARD	22.7 kg (50 lb)	56
* 99932806	FILTER SAND 20-40 STANDARD	~1750 kg (3,850 lb)	1 Bulk Bag
* 99932153	FILTER SAND 30-50	22.7 kg (50 lb)	56
* 99932805	FILTER SAND 30-50	~1750 kg (3,850 lb)	1 Bulk Bag
* 99932154	FILTER SAND 40-70	22.7 kg (50 lb)	56
* 99932808	FILTER SAND 40-70	~1750 kg (3,850 lb)	1 Bulk Bag
FILTER GRAVEL			
* 99932334	FILTER GRAVEL 2 X 1	25 kg (55 lb)	56
* 99932795	FILTER GRAVEL 2 X 1	~1750 kg (3,850 lb)	1 Bulk Bag
* 99932333	FILTER GRAVEL 1 X 1/2	25 kg (55 lb)	56
* 99932794	FILTER GRAVEL 1 X 1/2	~1750 kg (3,850 lb)	1 Bulk Bag
* 99932332	FILTER GRAVEL 1/2 X 1/4	25 kg (55 lb)	56
* 99932330	FILTER GRAVEL 1/4 X 1/8	25 kg (55 lb)	56
* 99932792	FILTER GRAVEL 1/4 X 1/8	~1750 kg (3,850 lb)	1 Bulk Bag
* 99932342	FILTER GRAVEL 1/8 X 1/16 PLASTIC BAGS	22.7 kg (50 lb)	56
* 99932791	FILTER GRAVEL 1/8 X 1/16	~1750 kg (3,850 lb)	1 Bulk Bag
* 99932006	FILTER GRAVEL 8-16	22.7 kg (50 lb)	56
GARNET			
9992356	GARNET 'C' 8-12	25 kg (55 lb)	40
9992792	GARNET 'C' 20-40	25 kg (55 lb)	40
9992794	GARNET 'C' 20-40	1 MT (2,205 lb)	1 Bulk Bag
9992894	GARNET 'C' 30-60	25 kg (55 lb)	40
9992896	GARNET 'I' 50-80	25 kg (55 lb)	40
WALNUT SHELL			
99932811	WALNUT SHELLS 12-20- 50#	22.7 kg (50 lb)	40
99932812	WALNUT SHELLS 20-40- 50#	22.7 kg (50 lb)	40
ANTHRACITE			
99932168	ANTHRACITE 0.6-0.8 mm.	23.6 kg (52 lb)	50
99932169	ANTHRACITE 0. 8-1.00 mm.	23.6 kg (52 lb)	50
99932165	ANTHRACITE 1.0 mm - 1.1 mm	23.6 kg (52 lb)	50
99932170	ANTHRACITE 1.0 mm- 1.1 mm	1MT (2,000 lb)	1 Bulk Bag
GRANULATED ACTIVATED CARBON			
99932174	GRANULAR ACTIVATED CARBON FILTER 8 x 30	22.7 kg (50 lb)	25
**	GRANULAR ACTIVATED CARBON FILTER 12 x 40	(1000 lb)	1

* These NSF/ANSI 61 certified products are manufactured by Target Products Ltd. Morinville AB

◆ This NSF/ANSI 50 certified product is distributed by Target Products Ltd.

- Limestone materials available on request
- Custom products specifications available on request
- We can package to specific weights in Bulk Bags if required

NOTICE: Obtain the applicable **LIMITED WARRANTY** at www.targetproducts.com/product-warranty
Or send a written request to Target Products Ltd., Five Concourse Parkway, Atlanta, GA 30328, USA.
© Quikrete Canada Holdings, Limited. Manufactured by Target Products Ltd. ©2022 Quikrete International, Inc.



FILTER AND WATER WELL SILICA SANDS & GRAVELS

PRODUCT

TARGET® Filter Silica Sands and Filter Gravels are high-silica materials processed in our Morinville plant to meet the requirements of individual water filtration systems. In addition to the standard grades listed below, sands and gravels can be manufactured for projects with other specifications. In addition Target supplies a premium filter sand to meet conditions in the most demanding environments.



Certified to NSF/ANSI 61

Target Products filter sands and gravels are NSF 61 Certified and meet all AWWA B100 standards.

USES AND ADVANTAGES

TARGET Filter Sand is suitable for many rapid and slow filtration systems. The washed feedstock is dried, to sterilize the materials, then sized to meet effective size and uniformity coefficient specifications. Rigorous quality control testing, during production, assures that the final product meets the requirements of the American Water Works Association Standard B100 and is tested and certified to ANSI/NSF 61 Standards for filtering materials.

PHYSICAL PROPERTIES

	Standard Media	Premium Media
Colour	Tan	Light Beige
Grain Shape	Sub-rounded	Sub-round to rounded
Bulk Density	95 – 100 lb/ft ³ (1520 – 1600 kg/m ³)	95-1000 lb/ft ³
	Filter Sand 1.50 tonnes per m ³	1.50 tonnes per m ³
	Fine Filter Gravels 1.53 tonnes per m ³	-
	Coarse Filter Gravels 1.60 tonnes per m ³	-
Hardness, Mohs	6.5 – 7.0	6.9-7.0
Specific Gravity	2.60 – 2.65	2.63 – 2.65
Moisture Content	<0.1% weight	<0.1% weight
Acid Solubility	<5% weight	<1% weight

Bulk density values vary with particle size. Values for individual products can be determined at the time of shipping if required.

PACKAGING

Target Filter Sands are available in 22.7 kg (50 lb) plastic bags, in 25 kg (55 lb) poly woven bags or in 1.75 tonnes (3850 lb) bulk bags. Target Filter Gravels are usually supplied in 25 kg (55 lb) poly woven bags or 1.75 tonnes (3850 lb) bulk bags. Other bag sizes and bulk deliveries are available on request.

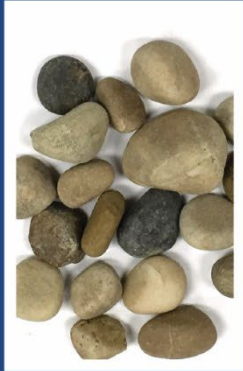
NOTICE: Obtain the applicable **LIMITED WARRANTY** at www.targetproducts.com/product-warranty
Or send a written request to Target Products Ltd., Five Concourse Parkway, Atlanta, GA 30328, USA.
© Quikrete Canada Holdings, Limited. Manufactured by Target Products Ltd. ©2022 Quikrete International, Inc.



FILTER SILICA SANDS & GRAVELS



FILTER GRAVEL 2 X 1



FILTER GRAVEL 1 X 1/2



FILTER GRAVEL 1/2 X 1/4



FILTER GRAVEL 1/4 X 1/8



FILTER SAND 4-10



FILTER GRAVEL 1/8 X 1/16



FILTER SAND 8-16



FILTER SAND 10-20



FILTER SAND 16-30



FILTER SAND
20-40 STANDARD



FILTER SAND
20-40 PREMIUM



FILTER SAND 30-50



FILTER SAND 40-70



FILTER SAND 50-100

NOTICE: Obtain the applicable **LIMITED WARRANTY** at www.targetproducts.com/product-warranty
Or send a written request to Target Products Ltd., Five Concourse Parkway, Atlanta, GA 30328, USA.
© Quikrete Canada Holdings, Limited. Manufactured by Target Products Ltd. ©2022 Quikrete International, Inc.

FILTER AND WATER WELL SILICA SANDS & GRAVELS

TYPICAL SIEVE ANALYSES - Percent Passing

Sieve Size		SANDS, Cumulative % Passing					
ASTM	Metric	10 – 20	16 – 30	Standard 20 – 40	Premium 20-40	30 – 50	40 – 70
No. 8	2.36 mm	100					
No. 10	2.00 mm	99 – 100					
No. 12	1.70 mm	90 – 100	100				
No. 16	1.18 mm	10 – 35	95 – 100	100	100		
No. 20	0.850 mm	0 – 3	30 – 55	90 – 100	93 - 97	100	100
No. 30	0.600 mm	0 – 1	5 – 10	20 – 45	15 - 40	80+	98+
No. 40	0.420 mm		0 – 3	5 – 10	0 - 5	30 – 45	60 – 80
No. 50	0.300 mm		0 – 1	0 – 1	0 - 1	0 – 10	15 – 30
No. 70	0.212 mm					0 – 2	1 – 3
No. 80	0.180 mm						0 – 1
Effective Size, d ₁₀ , mm		0.85 – 1.25	0.55 – 0.65	0.45 – 0.55	0.45 – 0.55	0.30 – 0.40	0.20 – 0.30
Uniformity Coefficient, d ₆₀ /d ₁₀		< 1.4	< 1.6	< 1.6	< 1.4	< 1.6	< 1.6

Sieve Size		GRAVELS, Cumulative % Passing						
ASTM	Metric	1 – 2"	½ - 1"	¼ - ½"	⅛ - ¼"	1/16 - ⅛"	4 – 10	8 – 16
2"	50 mm	100						
1 ½"	38 mm	88 – 92						
1"	25 mm	0 – 10	100					
¾"	19 mm	0 – 1	92 – 98	100				
½"	12.5 mm		4 – 10	98 – 100	100			
3/8"	9.5 mm		0 – 1	50 – 80	95 – 100			
No. 3	6.7 mm			2 – 8	50 – 75	100	100	
No. 4	4.75 mm						90 – 100	100
No. 6	3.36 mm				0 – 5	99 – 100	30 – 60	98 – 100
No. 8	2.36 mm						0 – 10	85 – 95
No. 10	2.00 mm					5 – 15	0 – 1	35 – 55
No. 14	1.41 mm					0 – 1		
No. 16	1.18 mm							0 – 1
Effective Size, d ₁₀ , mm		19 – 24	12 – 15	7 – 8	3.0 – 3.5	1.4 – 1.7	2.4 – 2.9	1.4 – 1.7
Uniformity Coefficient, d ₉₀ /d ₁₀		< 1.7	< 1.7	< 1.7	< 1.7	< 1.7	< 1.4	< 1.5

The sieve analyses given in the tables are typical values. Because actual values could change from time to time please confirm that effective size and uniformity coefficient values remain within specification.

NOTICE: Obtain the applicable **LIMITED WARRANTY** at www.targetproducts.com/product-warranty
Or send a written request to Target Products Ltd., Five Concourse Parkway, Atlanta, GA 30328, USA.
© Quikrete Canada Holdings, Limited. Manufactured by Target Products Ltd. ©2022 Quikrete International, Inc.



FILTER AND WATER WELL SILICA SANDS & GRAVELS

TYPICAL SIEVE ANALYSES - Percent Retained

Sieve Size		SANDS, Individual % Retained					
ASTM	Metric	10 – 20	16 – 30	Standard 20 – 40	Premium 20-40	30 – 50	40 – 70
No. 8	2.36 mm	0					
No. 10	2.00 mm	0 – 1	0				
No. 12	1.70 mm	0 – 10	0				
No. 16	1.18 mm	65 – 85	0 – 5		0		
No. 20	0.850 mm	10 – 30	40 – 65	0 – 10	3 – 7		
No. 30	0.600 mm	0 – 3	20 – 45	50 – 70	55 – 75	5 – 25	0 – 2
No. 40	0.420 mm		5 – 10	15 – 35	15 – 40	40 – 60	20 – 40
No. 50	0.300 mm		0 – 2	5 – 10	0 – 1	20 – 35	45 – 65
No. 70	0.212 mm					0 – 10	15 – 25
Pan		0 – 1	0 – 1	0 – 1	0 – 1	0 – 2	1 – 3
Effective Size, d ₁₀ , mm		0.85 – 1.25	0.55 – 0.65	0.45 – 0.55	0.45 - 0.55	0.30 – 0.40	0.20 – 0.30
Uniformity Coefficient, d ₆₀ /d ₁₀		< 1.4	< 1.6	< 1.6	< 1.4	< 1.6	< 1.6

Sieve Size		GRAVELS, Individual % Retained						
ASTM	Metric	1 – 2"	½ - 1"	¼ - ½"	⅛ - ¼"	1/16 - ⅛"	4 – 10	8 – 16
1 ½"	38 mm	8 – 12						
1"	25 mm	70 – 90	0					
¾"	19 mm	0 – 10	2 – 8					
½"	12.5 mm	0 – 1	80 – 10	0 – 2				
3/8"	9.5 mm		4 – 8	30 – 50				
No. 3	6.7 mm		0 – 1	30 – 50	0 – 5			
No. 4	4.75 mm						0 – 10	
No. 6	3.36 mm			2 – 8	85 – 95	0 – 3	40 – 60	0 – 2
No. 8	2.36 mm						30 – 55	5 – 15
No. 10	2.00 mm					85 – 95	0 – 10	35 – 55
No. 14	1.41 mm					5 – 10		
No. 16	1.18 mm							35 – 55
Pan					5 – 10	0 – 3	0 – 1	0 – 1
Effective Size, d ₁₀ , mm		19 – 24	12 – 15	7 – 8	3.0 – 3.5	1.4 – 1.7	2.4 – 2.9	1.4 – 1.7
Uniformity Coefficient, d ₉₀ /d ₁₀		< 1.7	< 1.7	< 1.7	< 1.7	< 1.7	< 1.4	< 1.5

The sieve analyses given in the tables are typical values. Because actual values could change from time to time please confirm that effective size and uniformity coefficient values remain within specification

NOTICE: Obtain the applicable **LIMITED WARRANTY** at www.targetproducts.com/product-warranty
Or send a written request to Target Products Ltd., Five Concourse Parkway, Atlanta, GA 30328, USA.
© Quikrete Canada Holdings, Limited. Manufactured by Target Products Ltd. ©2022 Quikrete International, Inc.



FILTER AND WATER WELL SILICA SANDS & GRAVELS

TYPICAL CHEMICAL ANALYSIS and PROPERTIES

STANDARD FILTER SAND		
Chemical Compound		Typical Value, % weight
Silica	SiO ₂	93.2 – 95.6
Alumina	Al ₂ O ₃	3.5 – 4.6
Iron Oxide	Fe ₂ O ₃	0.30 – 0.35
Calcium Oxide	CaO	0.25 – 0.65
Magnesium Oxide	MgO	0.08 – 0.15
Potassium Oxide	K ₂ O	0.70 – 0.90
Sodium Oxide	Na ₂ O	0.65 – 0.85
Titanium Oxide	TiO ₂	0.1 maximum
Loss on Ignition		0.3 maximum

PREMIUM FILTER SAND		
Chemical Compound		Typical Value, % weight
Silica	SiO ₂	98.0 – 99.0
Alumina	Al ₂ O ₃	0 – 0.3
Iron Oxide	Fe ₂ O ₃	0 – 0.2
Calcium Oxide	CaO	0 – 0.2
Magnesium Oxide	MgO	0 – 0.3
Potassium Oxide	K ₂ O	0 – 0.2
Sodium Oxide	Na ₂ O	0 – 0.4
Titanium Oxide	TiO ₂	0 – 0.2
Loss on Ignition		0 – 0.1



FILTER GLASS POOL & SPA

April, 2022

PRODUCT

FILTER GLASS™ Pool & Spa is manufactured from 100% recycled post-consumer glass beverage containers. With an unsurpassed manufacturing process, **FILTER GLASS** is a clean, high quality product, which makes it the #1 choice for your filter media.

Don't just use it, reuse it!

USES

For use in spas and hot tubs, water parks, swimming pools and aquariums.

ADVANTAGES

Improved clarity

- Provides high filtration capability
- Eliminates caving and tunnelling

Reduces operating costs

Extends filter life

- Less frequent and shorter backwash times
- Has long life expectancy in filter applications

Safe and easy to use

FILTER GLASS APPLICATION RATES

Sand Replacement

18 kg (39.7 lb) of **FILTER GLASS** replaces 22.7 kg (50 lb) of sand. Determine the amount of **FILTER GLASS** you need by multiplying the amount of sand by 0.80.

Filling Sand Filters with Filter Glass

1. Pea gravel is recommended for all filters using more than 90.7 kg (200 lb) of media. Use sufficient pea gravel to cover the filter laterals.
2. Determine the amount of media required
3. Empty filter and make needed repairs. Check that the laterals in bottom of filter are in good condition.
4. Fill filter half-way with water.
5. Slowly pour pea gravel into filter to cover the laterals and backwash.
6. Add **FILTER GLASS** on top of pea gravel base.
7. Close filter and backwash until water is clear.



T
A
R
G
E
T

P
R
O
D
U
C
T
S

L
T
D



NOTICE: Obtain the applicable **LIMITED WARRANTY** at www.targetproducts.com/product-warranty
Or send a written request to Target Products Ltd., Five Concourse Parkway, Atlanta, GA 30328, USA.
© Quikrete Canada Holdings, Limited. Manufactured by Target Products Ltd. ©2022 Quikrete International, Inc.

FILTER GLASS POOL & SPA

April, 2022

CHEMICAL COMPOSITION

Chemical Name	Common Name and synonyms	CAS#	Concentration % by weight
Glass	Silica Amorphous	65777-17-13	70.0 - 100.0
Sodium monoxide	Sodium oxides	12401-86-4	10.0 - 14.0
Calcium oxide	Calcium monoxide Unslaked lime	1305-78-8	9.0 - 12.0
Aluminum oxide	Aluminum trioxide	1344-28-1	1.0 - 5.0
Iron oxide	Ferric oxide Diiron trioxide	1309-37-1	1.0 - 5.0
Potassium oxide	Not available.	12136-45-7	1.0 - 5.0
Crystalline silica	Quartz silica Crystallized silicon dioxide	14808-60-7	0.1 - 1.0

The % concentrations for the above listed chemicals will vary from batch to batch. Concentrations listed represent the actual concentration range for each chemical.

This product contains trace amounts of: Beryllium; Arsenic; Cadmium

SIEVE ANALYSIS DATA

ASTM-E11 Sieve (US Std.)	ISO Sieve Size (mm)	8-20 Course #2		Regular Pool Filter	
		% Retained	% Passing	% Retained	% Passing
8	2.380	0	100		
12	1.680	22.0	78.0		
16	1.180	-	-	0.1	99.9
20	0.850	70.8	7.2	27.3	72.6
30	0.600	7.0	0.2	54.0	18.6
40	0.425	0.2	0	16.6	2.0
50	0.300			1.9	0.1
Pan				0.1	0
Effective size d10mm			0.85-1.00		0.50-0.60
Uniformity Coefficient d60/d10			<1.65		<1.45

PACKAGING

FILTER GLASS is available in 22.7 kg (50 lb) plastic bags, other bag sizes and bulk deliveries are available on request.

NOTICE: Obtain the applicable **LIMITED WARRANTY** at www.targetproducts.com/product-warranty
Or send a written request to Target Products Ltd., Five Concourse Parkway, Atlanta, GA 30328, USA.
© Quikrete Canada Holdings, Limited. Manufactured by Target Products Ltd. ©2022 Quikrete International, Inc.



GARNET “C”

April, 2022

PRODUCT

“C” Garnet is a naturally occurring almandite garnet, the hardest of all known garnet types. Almandite garnet is a high hardness, high density granular filter media and can be used extremely effectively as the lower strata in a dual media filter bed. Its high specific gravity as well as its chemical and abrasive resistance makes almandite garnet ideal for filtration.

USES

“C” Garnet is suitable for sandblasting, textile blasting (jeans), water filtration, glass and tube blasting, anti-slip coating, water jet cutting, abrasive applications, tumbling media and non-skid surfaces.

ADVANTAGES

- “C” Garnet is recoverable and reusable.

PHYSICAL PROPERTIES

Colour	Reddish Brown Deep Red
Grain Shape	Sub-angular to angular
Hardness, Moh	7-8
Bulk Density	2150-2400 kg / m ³ (134-150 lbs / ft ³)
Specific Gravity	3.75-4.30g/cm ³
Silica Content	<0.1% weight



GARNET 8-12



GARNET 20-40



GARNET 30-60

NOTICE: Obtain the applicable **LIMITED WARRANTY** at www.targetproducts.com/product-warranty
Or send a written request to Target Products Ltd., Five Concourse Parkway, Atlanta, GA 30328, USA.
© Quikrete Canada Holdings, Limited. Manufactured by Target Products Ltd. ©2022 Quikrete International, Inc.



GARNET “C”

April, 2022

SAFETY

“C” Garnet Filter Media is an inert and stable mineral that doesn’t contain any ingredients requiring classification under WHMIS regulations.

“C” Garnet is chemically inert, with less than 1% free silica and no heavy metals.

Garnet is classified in Fisheries and Oceans Canada Report #1692 of Jan, 91 as:

- (a) Having moderate to low toxicity to fish, i.e. 96-h LC50 \geq 100 mg/L.
(Test value was >70000 mg/L.)
- (b) Not known to be persistent and not likely to accumulate in animal tissues.

Consult your local Industrial Health & Safety Regulations, NIOSH or other requirements for guidance on the required safety procedures and equipment.

TYPICAL CHEMICAL ANALYSIS

COMPOSITION	VALUE
SiO ₂	35.0 – 40.0%
Al ₂ O ₃	20.0 – 28.0 %
FeO	25.0 - 27.0 %
Fe ₂ O ₃	5.0 – 10.0 %
MnO	1.5 – 2.5 %
MgO	0.5 – 2.2 %
CaO	1.5 – 5.0%

The sieve analysis given in the following tables are typical values. Actual values could change from time to time.



GARNET “C”

April, 2022

“C” GARNET SPECIFICATIONS PERCENT PASSING

Sieve Size		Mesh # 20-40	Mesh # 30-60	Mesh # 120
U.S. #	mm			
12	1.700			
16	1.180	100		
20	0.850	97.8	100.0	
30	0.600	15.6	95.5	
40	0.425	0.8	60.6	100.0
50	0.300	0.5	30.2	100.0
70	0.212		3.7	100.0
80	0.180			99.8
100	0.150			89.2
140	0.106			27.8
200	0.075			6.2
Pan				0.1

“C” GARNET SPECIFICATIONS INDIVIDUAL PERCENT RETAINED

Sieve Size		Mesh # 20-40	Mesh # 30-60	Mesh # 120
U.S. #	mm			
12	1.700			
16	1.180	0.0		
20	0.850	2.2	0.0	
30	0.600	82.2	4.5	
40	0.425	14.8	34.9	0.0
50	0.300	0.3	30.4	0.0
70	0.212		26.5	0.0
80	0.180			0.2
100	0.150			10.7
140	0.106			61.4
200	0.075			21.6
Pan		0.3	3.6	6.1
Total		99.8	99.9	99.9

PACKAGING

TARGET “C” Garnet is available in

- 25 kg (55 lb) bags, 40 bags per pallet
- bulk bags = 1 tonne bulk bag per pallet

NOTICE: Obtain the applicable **LIMITED WARRANTY** at www.targetproducts.com/product-warranty
Or send a written request to Target Products Ltd., Five Concourse Parkway, Atlanta, GA 30328, USA.
© Quikrete Canada Holdings, Limited. Manufactured by Target Products Ltd. ©2022 Quikrete International, Inc.



TARGET PRODUCTS LTD

ENGLISH WALNUT SHELL GRIT

April, 2022

PRODUCT

Walnut Shell can be used to remove suspended solids and organic material from produced water, surface water and river, lake and well water. Walnut Shell Grit treats and removes suspended solids, oily residues, ash and metallic hydroxides from industrial liquids in power generation, metal working, and municipal chemical petroleum and petrochemical applications.

OTHER USES

Walnut Shell Grit prevents lost circulation on oil well drilling. Provides a non-skid enhancer in abrasive paints around swimming pools, walkways, dock boards and other areas where a rough surface is required. Serves as a filler prior to burnout – a porosity enhancer for grinding wheels and ceramics. Preserves gel-coat when removing paint from fiberglass boats. Wide range of surface patterns can be achieved with 7 grades of Walnut Shell Grit (6/12 to 60/100) available.

PHYSICAL PROPERTIES

- Non-toxic, **filter media**, blast-cleaning media.
- Specific gravity: 1.2 – 1.4
- Grain Shape: Angular; multi-faceted
- Density 39 lb / ft³
- Hardness (Mohs) 3
- Charring Temperature 243°C (470°F)



WALNUT 12-20



WALNUT 20-40

20-40 FINE ENGLISH WALNUT SHELL GRIT

	TYPICAL	MAXIMUM
MOISTURE (by weight)	7%-8%	11%
TOLUENE SOLUBILITY (by weight)	0.6%-0.8%	1.5%
PARTICLE SIZE DISTRIBUTION (cumulative percent retained on screen)		

NOTICE: Obtain the applicable **LIMITED WARRANTY** at www.targetproducts.com/product-warranty Or send a written request to Target Products Ltd., Five Concourse Parkway, Atlanta, GA 30328, USA.
 © Quikrete Canada Holdings, Limited. Manufactured by Target Products Ltd. ©2022 Quikrete International, Inc.



ENGLISH WALNUT SHELL GRIT

April, 2022

PHYSICAL PROPERTIES (continued)

U.S. STANDARD SIEVE#	TOLERANCE	TYPICAL WALNUT SHELL PRODUCED FOR TARGET
#12	0.1%	NIL
#18	10% max	5 – 7%
#40	88% min	92 - 94%
#100	2% min	99.8%

12-20 MEDIUM ENGLISH WALNUT SHELL GRIT

	TYPICAL	MAXIMUM
MOISTURE (by weight)	7%-8%	11%
TOLUENE SOLUBILITY (by weight)	0.6%-0.8%	1.5%
PARTICLE SIZE DISTRIBUTION (percent on screen)		

U.S. STANDARD SIEVE#	TOLERANCE PRODUCED FOR TARGET	TYPICAL WALNUT SHELL PRODUCED FOR TARGET
+4	NIL	NIL
+10	0.0%-10.0%	0.5%
+20	85.0%-100.0%	96.5%
+30	0.0%-10.0%	3.0%
-30	5.0 (max) %	1.0%

PACKAGING

All grades of Walnut Shell Grit are available in 22.68kg (50 lb) paper bags and 907.20kg (2000 lb) or 1134kg (2500 lb) super sacks. Product available in the following sizes:

6/12	18/40
8/12	40/60
12/20	60/100
20/40	

All oil well grades and custom grades available.

SAFETY

Walnut Shell Grit abrasive does not contain any hazardous ingredients. All appropriate safety precautions must be followed when using Walnut Shell Grit or any other material for abrasive applications. Consult your local Industrial Health & Safety Regulation, NIOSH or other requirements for guidance on the required safety procedures and equipment.

NOTICE: Obtain the applicable **LIMITED WARRANTY** at www.targetproducts.com/product-warranty Or send a written request to Target Products Ltd., Five Concourse Parkway, Atlanta, GA 30328, USA. © Quikrete Canada Holdings, Limited. Manufactured by Target Products Ltd. ©2022 Quikrete International, Inc.



ANTHRACITE FILTER MEDIA

PRODUCT

Anthracite filter media are a series of anthracite coal products designed for water filtration applications providing the advantages of premium quality anthracite. In addition to filter sands and gravels, Target Products supplies premium NSF Certified Anthracite that meet all AWWA B100 Standards.

USES AND ADVANTAGES

Anthracite filter media are produced under closely controlled conditions to give products that meet the requirements of the American Water Works Association standard ANSI/AWWA B100-89. Size grades are available to meet a wide range of individual project specifications.

TYPICAL PHYSICAL PROPERTIES

Colour	Black
Grain Shape	Angular to sub-angular, shape factor 0.6
Bulk Density	Approximately 52 lb/ft ³ (833 kg/m ³) Varies with particle size.
Hardness, Moh	3.0 – 3.8
Specific Gravity	>1.4 (ASTM C 128)
Attrition Loss	Minimal

PACKAGING

Anthracite materials are available in 1 cubic foot (52 lb) colour coded polythene bags, stacked 50 per pallet, or in bulk bags containing 1 short ton or 1 metric ton.

STANDARD SIZES

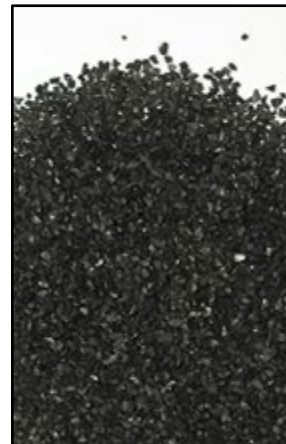
Grade No.	Size, inches	Size, mm
1	3/128 x 1/32	0.6 – 0.8
1 ½	1/32 x 7/8	0.8 – 2.2* (* in 0.2mm increments)
2	3/32 x 3/16	2.4 – 4.75
3	3/16 x 5/16	4.75 – 8.0
4	5/16 x 9/16	8.0 – 14.3
5	9/16 x 13/16	14.3 – 20.6
6	13/16 x 1 5/8	20.6 – 41.3
7	1 5/8 x 2 1/16	41.3 – 62.0

Size requirements vary with filter types and individual designer's requirements. Non-standard sizes are available to meet individual project specifications. Uniformity

NOTICE: Obtain the applicable **LIMITED WARRANTY** at www.targetproducts.com/product-warranty
Or send a written request to Target Products Ltd., Five Concourse Parkway, Atlanta, GA 30328, USA.
© Quikrete Canada Holdings, Limited. Manufactured by Target Products Ltd. ©2022 Quikrete International, Inc.



ANTHRACITE
0.8 – 1.0 mm



ANTHRACITE
1.0 – 1.1 mm



Certified to NSF/ANSI 61

T
A
R
G
E
T

P
R
O
D
U
C
T
S

L
T
D



ANTHRACITE FILTER MEDIA

Coefficient values are typically 1.7, 1.6 or 1.5 to meet project requirement.

In addition to filter sands and gravels, Target Products supplies premium NSF Certified Anthracite that meet all AWWA B100 Standards.

T
A
R
G
E
T

P
R
O
D
U
C
T
S

L
T
D

NOTICE: Obtain the applicable **LIMITED WARRANTY** at www.targetproducts.com/product-warranty
Or send a written request to Target Products Ltd., Five Concourse Parkway, Atlanta, GA 30328, USA.
© Quikrete Canada Holdings, Limited. Manufactured by Target Products Ltd. ©2022 Quikrete International, Inc.



GRANULAR ACTIVATED CARBON FILTER MEDIA

PRODUCT

Granular Activated Carbon (GAC) is manufactured using a steam activation process. The products have been designed and developed for high efficiency water purification. Product options include coconut and coal sources and economical remanufactured GAC.

USES AND ADVANTAGES

- High efficiency filtration and purification
- High efficiency regeneration
- Product readily water wets
- Manufactured under ISO 9002 Quality Assurance system

TYPICAL PROPERTIES

Grade	GAC-L 4 x 8, 8 x 30, 12 x 40 & 20 x 50
Colour	Black
Bulk Density	Approximately 28 lb/ft ³ (450 kg/m ³). Varies w/particle size.
Hardness (Abrasion No.)	95 – 99 (ASTM D3802)
Mesh Size (U.S. Sieve)	5% maximum on upper screen 5% maximum through lower screen
Apparent Density, g/cc	0.44 – 0.50
Apparent Density, lb/ft ³	27.5 – 30
Moisture	2 – 3% maximum, as packed
pH	7 ± (ASTM D3838)
Ash	6% (ASTM D2866)
Surface Area	900 – 1100 m ² /g (BET N)
Pore Volume	1.11 ml/g
Iodine Number	>1000 mg/g (ASTM D4607)
Methylene Blue	260 mg/g (CEFIC 2.4)
Phenol	5.7% (DIN 19603)
Dechlorination Half Length	2.9 cm (DIN 19603)
Molasses No.	200 minimum

CAUTION

Wet activated carbon can react with oxygen to make the atmosphere dangerous for human life. A suitable confined space entry procedure must be used in full accordance with applicable local, state or national regulations. Entry to enclosed spaces, containing activated carbon, must only be allowed when adequate precautions have been taken to ensure the space is properly ventilated with fresh air and the atmosphere is continuously monitored to confirm there is adequate oxygen content for respiration.

PACKAGING

Available in 25 kg (50 lb) (1.75 cu.ft) double walled paper bags and 500 kg (1102 lb) super sacks.

NOTICE: Obtain the applicable **LIMITED WARRANTY** at www.targetproducts.com/product-warranty
Or send a written request to Target Products Ltd., Five Concourse Parkway, Atlanta, GA 30328, USA.
© Quikrete Canada Holdings, Limited. Manufactured by Target Products Ltd. ©2022 Quikrete International, Inc.





CONTACT INFORMATION

FOR TECHNICAL AND SALES ASSISTANCE

MERV ROGAN	Tel: 1 780 493 1345	Email: mrogan@targetproducts.com
DON LARSEN	Tel: 1 604 556 4137	Email: dlarsen@targetproducts.com

PLANT LOCATIONS

VANCOUVER PLANT:	Tel: 1 604 856 7976	Fax: 1 604 856 7972
1080 Bradner Road Abbotsford, BC Canada V4X 1H8	Toll Free: 1 888 484 1258	Orders: AbbotsfordOrder@Quikrete.ca

DON LARSEN	Tel: 1 604 556 4137	Email: dlarsen@targetproducts.com
-------------------	----------------------------	--

CALGARY PLANT:	Tel: 1 403 279 8189	Fax: 1 403 279 4829
5150 90 Avenue, SE Calgary AB Canada T2C 2T2	Toll Free: 1 800 661 8482	Orders: CalgaryOrder@Quikrete.ca

EDMONTON PLANT:	Tel: 1 780 939 3033	Fax: 1 780 939 3044
9503 87 Avenue Morinville AB Canada T8R 1K8	Toll Free: 1 800 575 0500	Orders: MorinvilleOrder@Quikrete.ca

MERV ROGAN	Tel: 1 780 493 1345	Email: mrogan@targetproducts.com
-------------------	----------------------------	---

WINNIPEG PLANT:	Tel: 1 204 654 8320	Fax: 1 204 654 8329
400 Pandora Avenue W Winnipeg MB Canada R2C 3A5	Toll Free: 1 855 654 8320	Orders: WinnipegOrder@Quikrete.ca

MIKE COGHILL	Tel: 1 204 807 3172	Email: mcoghill@quikrete.ca
---------------------	----------------------------	------------------------------------