

PREMIUM COLOUR PIGMENTS

February 2018 - Page 1 of 5

PRODUCT

At **TARGET**, we take colour very seriously. Our standard colours presented in our **DRYMIX** Brand Colour Brochures are reasonable representative samples of the colours expected in the finished product. Although, it is important to understand that job conditions have an effect on the final finished color and some variation is inevitable. With cement products, as opposed to paint, drying or curing times as well as texture changes make a difference in the final result.

We use select prime colour pigments only. These oxide pigments are beneficiated to strict control standards by world-class colour producers and are manufactured for use in cement-based mixes.

TARGET maintains its own colour blending and packaging factory.

DRYMIX Premium Colour Pigments are blended in a high intensity blender and then compared to standards to ensure that each colour pack is representative to the standard.

It is not necessary to reference batch numbers. We take that responsibility.

Mixing **DRYMIX Premium Colour Pigments**

1. Do not vary the shade of **DRYMIX** Standard Colours.
2. Always mix one pack of **DRYMIX** Premium Colour Pigment to two bags of **DRYMIX TECHTURE™ Finish Coat Mix** or **DRYMIX Parging Mix**.
3. Make sure you have the correct base for the colour selected. If you desire a shade different than on the colour chart, please contact us. Mixing the incorrect amount or incorrect base may change the colour altogether.
4. Add the **DRYMIX Premium Colour Pigment** to the mix water before adding the **DRYMIX TECHTURE Finish Coat Mix** or **DRYMIX Parging Mix**.
5. Keep mix batch ingredients containers separate until batch is completed and double-checked.

Colour consistency of the finished job, is a product of mix, application and base consistency. Water quantity, drying conditions, or speed of take-up, are important to colour consistency. The thickness and texture consistency of the base as well as the thickness and texture of the finish are also important factors.

SIZE

DRYMIX Premium Colour Pigments come in plastic bags packaged 12 bags per box. The bag size varies in accordance with the colour being achieved.

STORAGE

Store in a dry place. Keep out of reach of children.

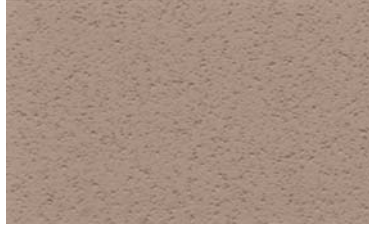
NOTICE: Obtain the applicable **LIMITED WARRANTY** at www.targetproducts.com/product-warranty
Or send a written request to Target Products Ltd., Five Concourse Parkway, Atlanta, GA 30328, USA.
CODEMIX® and **TECHTURE®** are trademarks of Drymix Systems, Inc., Target Products Ltd. is an authorized licensee.
Manufactured by Target Products Ltd. ©2018 Quikrete International, Inc.



PREMIUM COLOUR PIGMENTS

February 2018 - Page 2 of 5

#75 Portobello Mushroom Base T 300



#66 Bear Creek Trail Base T 200



#46 Mystic Gold Base T 200



#88 Chestnut Base T 300



#21 Butternut Base T 200



#86 Clay Buff Base T 200



#11 Cashmere Base T 200



#79 Tuscan Earth Base T 300



#62 Southern Shadow Base T 200



#39 Wheatland Base T 200



#26 Carmella Base T 200



#81 Brushed Leather Base T 300



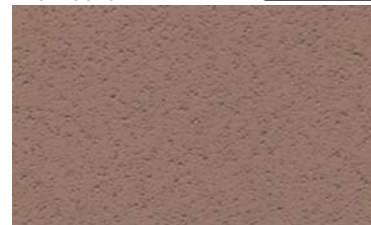
#35 French Vanilla Base T 200



#74 Prairie Sand Base T 300



#76 Mocha Base T 300



DRYMIX Brand, by **TARGET Products Ltd.** represents premium quality products that are carefully formulated and manufactured for use where **BUILDING CODE-Compliant** Products are required.

NOTICE: Obtain the applicable **LIMITED WARRANTY** at www.targetproducts.com/product-warranty
Or send a written request to Target Products Ltd., Five Concourse Parkway, Atlanta, GA 30328, USA.
CODEMIX® and TECHTURE® are trademarks of Drymix Systems, Inc., Target Products Ltd. is an authorized licensee.
Manufactured by Target Products Ltd. ©2018 Quikrete International, Inc.

T
A
R
G
E
T

P
R
O
D
U
C
T
S

L
T
D



PREMIUM COLOUR PIGMENTS

February 2018 - Page 3 of 5



DRYMIX Brand, **CODEMIX**® is a premium grade Portland cement plaster complete with all ingredients except water
PARGINGMIX is complete with all ingredients except water and desired colour
TECHTURE® is a complete stucco finish with all ingredients except water and desired colour
CODEMIX®, **PARGINGMIX** and **TECHTURE**® are made with clean, well graded blended sand
Note: This is a general representation of colours – we do not guarantee an exact match

NOTICE: Obtain the applicable **LIMITED WARRANTY** at www.targetproducts.com/product-warranty
Or send a written request to Target Products Ltd., Five Concourse Parkway, Atlanta, GA 30328, USA.
CODEMIX® and **TECHTURE**® are trademarks of Drymix Systems, Inc., Target Products Ltd. is an authorized licensee.
Manufactured by Target Products Ltd. ©2018 Quikrete International, Inc.



PREMIUM COLOUR PIGMENTS

February 2018 - Page 4 of 5



Mix Quantities: All **DRY**MIX Brand premium colour packs are designed to be used at the ratio of one colour pack to two - 80 kg bags of the appropriate base. Color pack sizes will vary from colour to colour.

NOTICE: Obtain the applicable **LIMITED WARRANTY** at www.targetproducts.com/product-warranty
Or send a written request to Target Products Ltd., Five Concourse Parkway, Atlanta, GA 30328, USA.
CODEMIX® and TECHTURE® are trademarks of Drymix Systems, Inc., Target Products Ltd. is an authorized licensee.
Manufactured by Target Products Ltd. ©2018 Quikrete International, Inc.



PREMIUM COLOUR PIGMENTS

February 2018 - Page 5 of 5



Colours designed for use with Base **TECHTURE® T300** can be used in **PARGINGMIX**.
Some colour variation due to different bases is expected.
Note: This is a general representation of colours – we do not guarantee an exact match.

NOTICE: Obtain the applicable **LIMITED WARRANTY** at www.targetproducts.com/product-warranty
Or send a written request to Target Products Ltd., Five Concourse Parkway, Atlanta, GA 30328, USA.
CODEMIX® and TECHTURE® are trademarks of Drymix Systems, Inc., Target Products Ltd. is an authorized licensee.
Manufactured by Target Products Ltd. ©2018 Quikrete International, Inc.

